



Specification for HDDI (PD) & Print (P) 36oz Cut Pile Textured Base

Construction:	Infinity Tip shear Pile Base
Yarn Content:	Ultron Type 6.6 Nylon
Dye Method:	DigiChrome Injection 76 or 25.6 dpi
Gauge:	1/10th
Width:	12'
Yarn Weight Tufted:	36 oz
Stitch Rate:	13.5 SPI
Primary Backing:	Woven Polypropylene
Secondary Backing:	Woven Polypropylene
Pile Height:	.280"
Total Thickness:	.450"
Pattern Repeat:	TBD

Performance

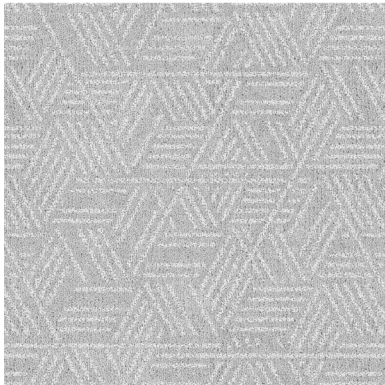
Flame Resistance:	Passes DOC FF-1-70
Static Control:	Less than 3.5 KV
Flooring Radiant Panel:	Class 1 (ASTM 648)
Smoke Density:	Less than .450 (ASTM E622)
Soil Resistance:	Commercial Anti-Soil Protection
Bleach Guard:	By request

Warranties

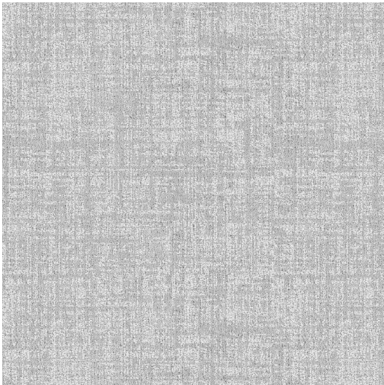
Wear:	10 Year Limited
-------	-----------------

Textures

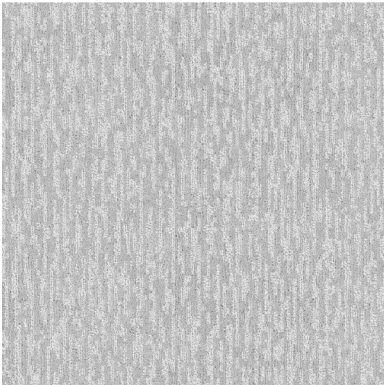
texture options for print carpet



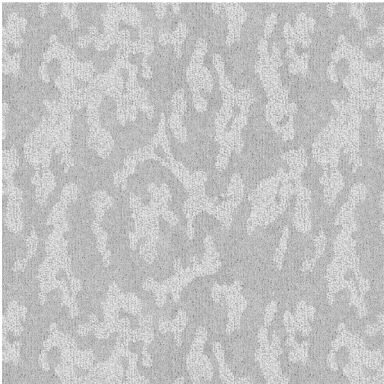
Geo 18"x22" repeat



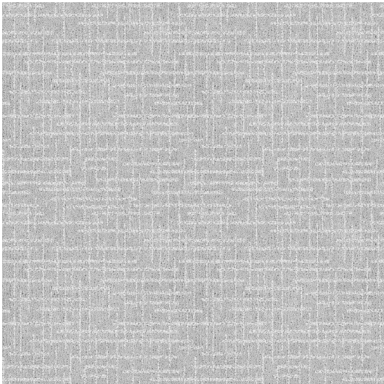
Abstract Grid 18"x18" repeat



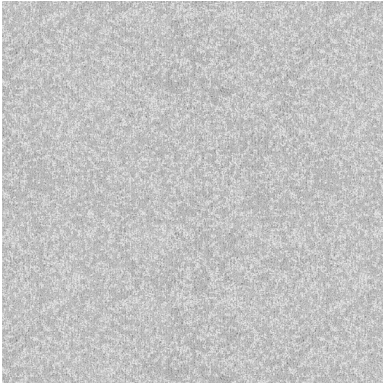
Blurred Vision 24"x24" repeat



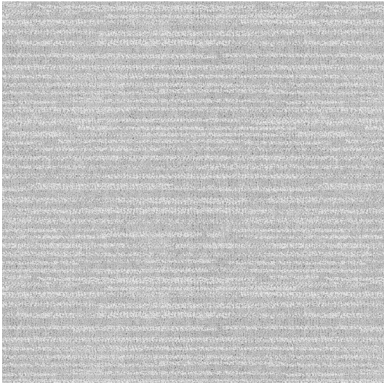
Clouds Base 18"x18" repeat



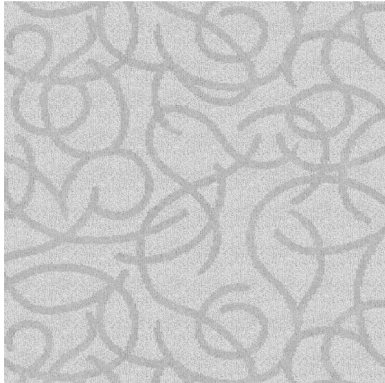
Linen 12"x13" repeat



London Fog 18"x18" repeat



Stria 18"x17" repeat



Swirls 36"x27" repeat